

NEW!

Henderson

STORMXTREME™



Available in
10' - 16' lengths

Maximum Liquid Capacity in a Combination Spreader

Full anti-icing, slurry, pre-wet, and granular deicing capabilities

10'	11'	12'	13'	14'	15'	16'
1080 Gallons	1188 Gallons	1296 Gallons	1404 Gallons	1512 Gallons	1620 Gallons	1728 Gallons
5.2 Cu. Yd.	5.7 Cu. Yd.	6.2 Cu. Yd.	6.7 Cu. Yd.	7.3 Cu. Yd.	7.8 Cu. Yd.	8.3 Cu. Yd.

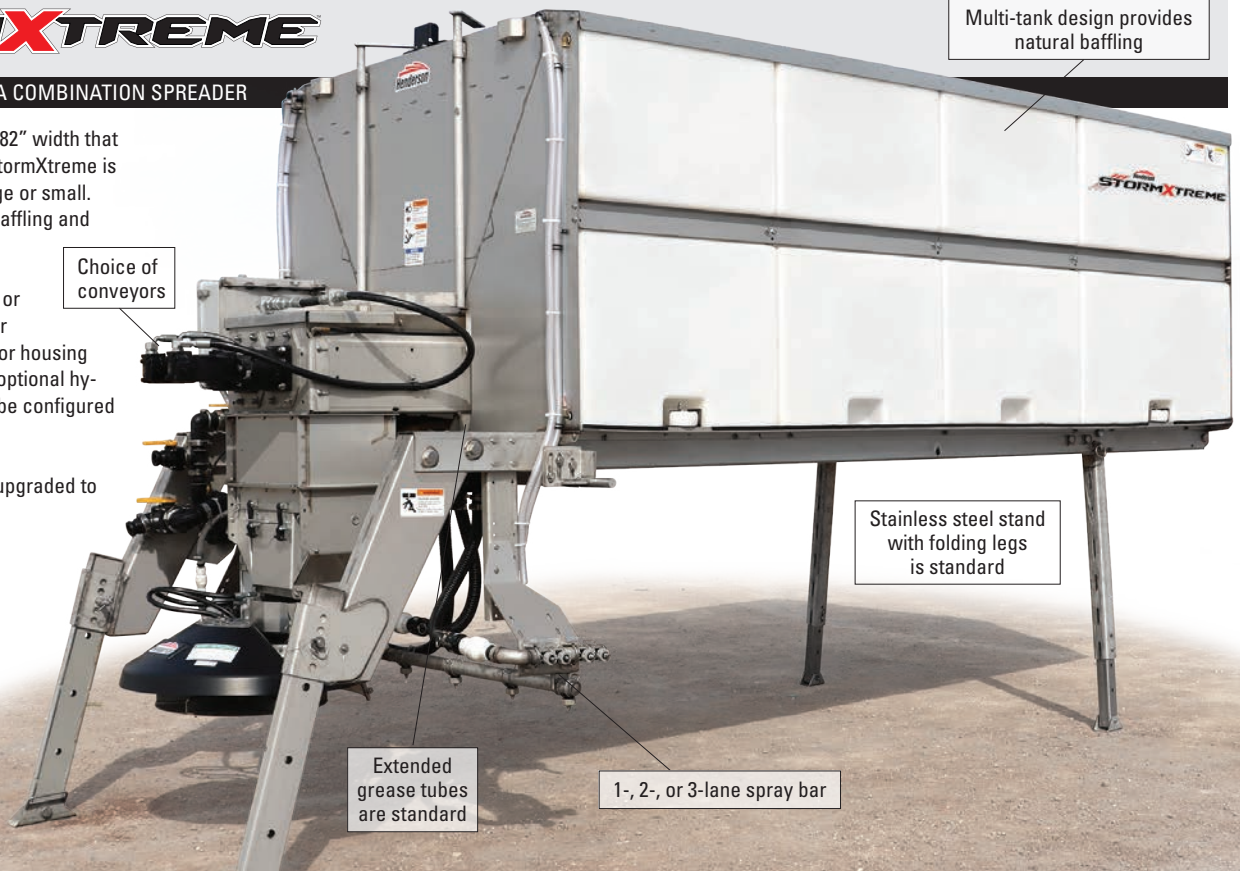


MAXIMUM LIQUID CAPACITY IN A COMBINATION SPREADER

Available in 10' - 16' lengths with an 82" width that fits in virtually any dump body, the StormXtreme is built to handle any winter storm, large or small. Multi-tank design provides natural baffling and fills evenly.

With a choice of conveyors, a 1-, 2-, or 3-lane spray bar and an optional rear cabinet available (see front image) for housing hydraulics, anti-ice flow meter, and optional hydraulic valve, the StormXtreme can be configured to meet any budget.

The standard spinner chute can be upgraded to our Direct Cast high-control spread pattern spinner.



STANDARD EQUIPMENT

Industry-leading liquid capacity in a combination spreader

Stainless steel body with poly tanks

Stainless steel stand w/ folding legs

Choice of conveyors

- Pintle chain
- Double-bar pintle chain
- Belt-over-chain
- Dual augers

Anti-ice flow meter

Guide wheels

1-, 2-, or 3-lane spray bar

Spinner w/ bypass chute

Quick-lock spray nozzles

Extended grease tubes

Lighting

OPTIONAL EQUIPMENT

Rear cabinet enclosure

Ladder on non-enclosure models

Slurry kit

Hydraulic valve

Direct Cast spinner

Top screens

- Mild steel
- Stainless steel



Adjustable trunnion latches are standard



Conveyor options include pintle chain, double-bar pintle chain, belt-over-chain or dual augers



Inverted Vee on dual auger models



Integral guide wheels are standard



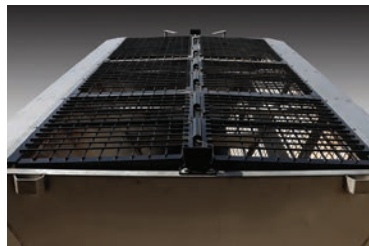
Electric ball valves for 1-, 2-, or 3-lane spray bar



Easily replaceable spray nozzles are standard



Standard spinner or optional Direct Cast spinner



Top grate screens
Stainless steel screens optional



Spinner bypass chute is standard



1085 S. Third Street, Manchester, IA 52057
Toll Free: (800) 359-4970
www.HendersonProducts.com

